

2021 - 2022

FOREST TREE NURSERY SEEDLING  
PRODUCTION SURVEY

Annakay Newell

# 2021 - 2022 Survey

---

- Questionnaire sent in June to all available nursery email addresses in 12 southern states.
- Used online Qualtrics to collect seedling information.
- Follow up telephone calls and email requests made to maximize participation and update addresses.
- Creation of an Excel data file, then data summary using SAS.
- Report preparation.

# Questionnaire Response

---

- Total of 53 surveys sent out via Qualtrics Online Form
- 41 were filled out with seedling production numbers.
- 12 nurseries did not respond to online request.
- All 12 nurseries had responded to our requests in previous years.
- Used previous years' numbers.
- Fewer longleaf nursery production “updates”

# Conifer Production by Stock: 2021-22

---

Stock	2020 Conifer Production	2021 Conifer Production	Percent Change
Bareroot Stock	854,128,000	867,074,000	+ 1.4%
Container Stock	269,381,000	261,395,000	-3.0%
Total Conifer	1,123,263,000	1,128,469,000	+ 0.4%

Table 1, 2 & 3

# Conifer Production: 2021-2022

---

Species	2020 Production	2021 Production	Percent Change
Loblolly Pine	902,811,000	924,688,000	+2.3 %
Slash Pine	103,997,000	102,368,000	-1.6%
Longleaf Pine	95,438,000	87,117,000	-8.7 %

- 83% of Loblolly pine produced is bareroot stock, same from last year
- 79% of Slash pine produced is bareroot stock, up 3% from last year
- 87% of Longleaf pine produced is container stock, same as last year

# Conifer Production: 2021-2022

---

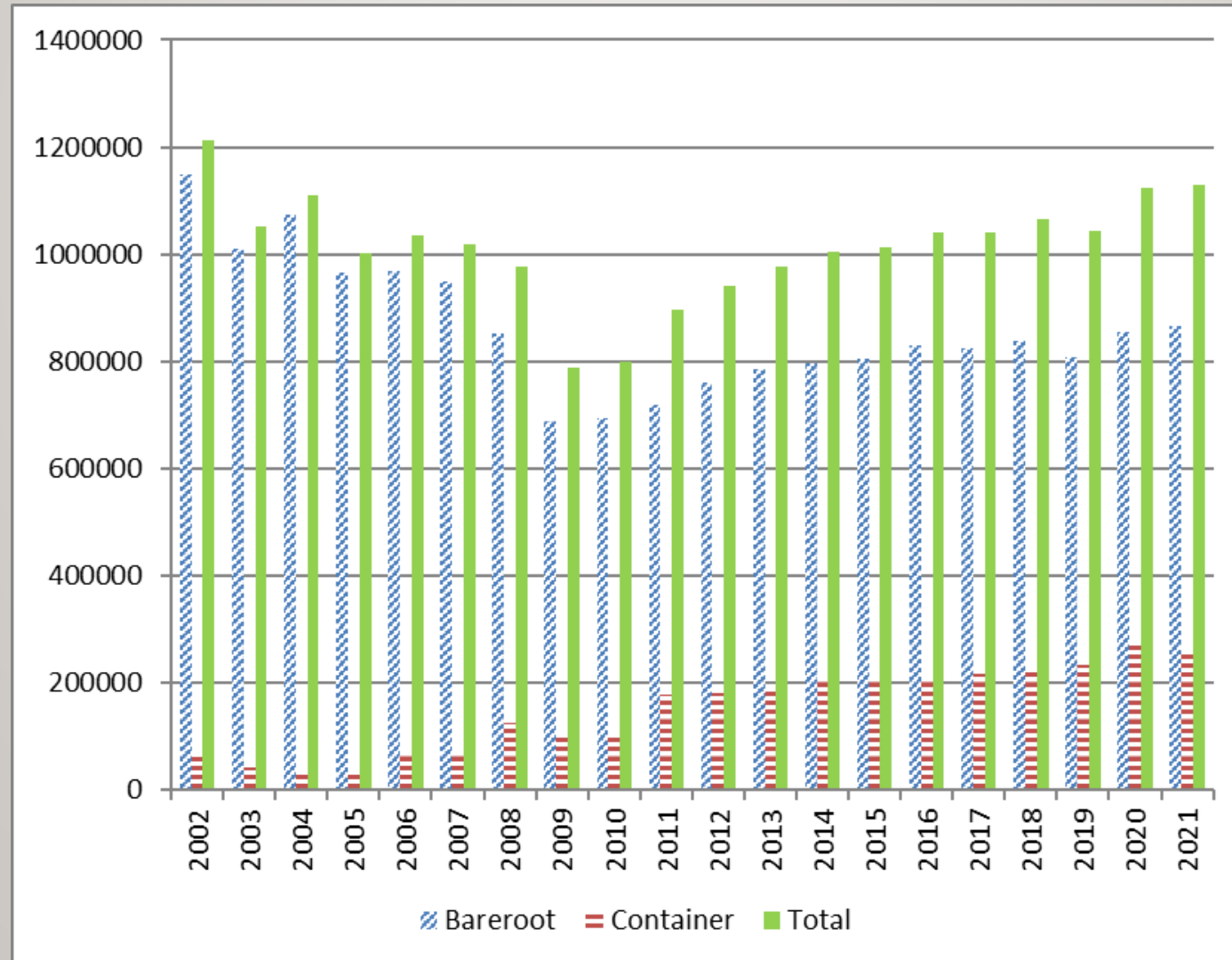
	2021-22	2020-21	2019-20	2018-19	2017-18	2016-17	2015-16
Loblolly	82%	81%	80%	80%	79%	78%	77%
Slash	9%	9%	9%	9%	10%	11%	10%
Longleaf	8%	8%	9%	9%	9%	9%	11%
Total	99%	98%	98%	98%	98%	98%	98%

# Production by Ownership Category: CONIFERS

	2020-2021		2021-2022	
	Production	Percent	Production	Percent
Bareroot				
State	69,458,000	9	64,190,000	7
Private	590,400,000	69	522,965,000	60
Industry	194,267,000	23	279,918,000	32
Container				
State	8,095,000	3	6,039,000	2
Private	240,945,000	89	236,135,000	90
Industry	20,342,000	8	19,221,000	7

Table 7

# CONIFER Production by Stock Type: 2002-2021





# Hardwood Production

---

	2021-2022		2020-2021		2019-2020	
	Numbers	Percent Change	Numbers	Percent Change	Numbers	Percent Change
Bareroot Stock	26,140,000	+8.4%	23,954,000	- 1.5%	24,312,000	+7.0%
Container Stock	257,000	+5.4%	243,000	-40.3%	341,000	+2.0%
Total Hardwood	26,397,000	+8.3%	24,197,000	-1.9%	24,653,000	+7.0%

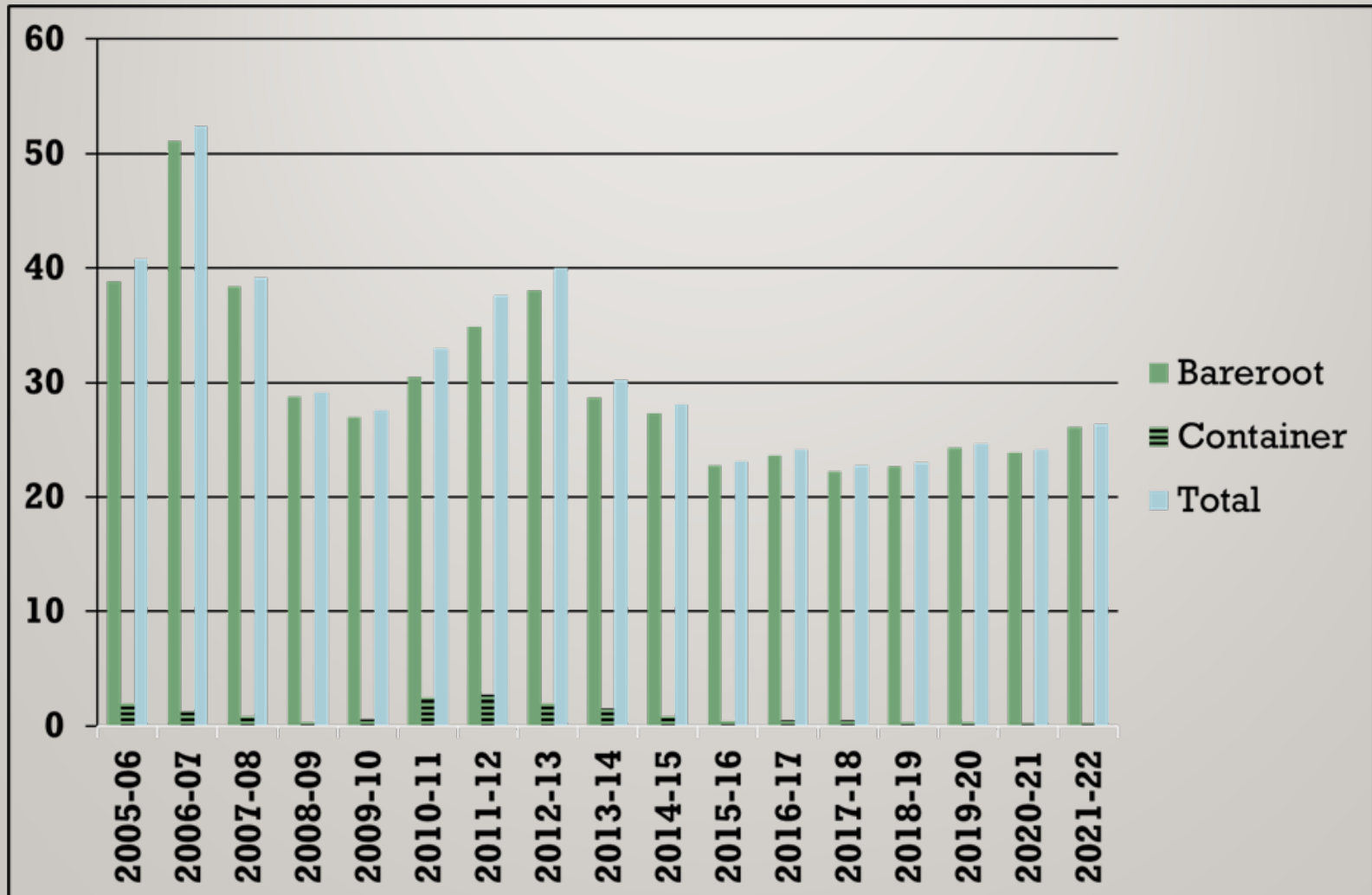
Table 4, 5 & 6

# RESULTS - Hardwood production

	2021-22	% Change Previous yr	2020-21	% Change Previous yr
Dogwood	638,000	33%	426,000	52.1%
Green Ash	339,000	-12.2%	386,000	-1.8%
Oak	14,608,000	-6.4%	15,613,000	-2.2%
Others	6,922,000	56.9%	4,411,000	-12.8%
Pecan	666,000	30.6%	510,000	-22.7%
Sweetgum	1,859,000	20.1%	1,548,000	11.1%
Sycamore	717,000	12.7%	636,000	24.7%
Walnut	138,000	23.2%	112,000	-10.7%
Yellow Poplar	510,000	-8.1%	555,000	7.7%
Total	26,397,000	9.1%	24,197,000	-1.9%

Table 6

# Hardwood Production 2005-2021



# Production by Ownership Category: Hardwoods

	2020-2022		2020-2021		2019-2020	
	Production	Percent	Production	Percent	Production	Percent
Bareroot						
State	13,039,000	50	8,787,000	37	10,081,000	41
Private	13,101,000	50	15,165,000	63	14,229,000	59
Industry	0	0	0	0	0	0
Container						
State	4,000	2	4,000	3	3,000	1
Private	252,000	98	238,000	98	338,000	99
Industry	0	0	0	0	0	0

Table 7

# Production by Ownership Category: ALL SPECIES

	2020-2021		20-21	19-20 (MM)	18-19 (MM)	17-18 (MM)	16-17 (MM)
State	83,272,000	7%	8%	8%	8%	9%	9%
Private	772,453,000	67%	74%	71%	69%	67%	53%
Industry	299,139,000	26%	19%	21%	22%	24%	38%
Total	1,154,864,000		1,147.7	1,066.9	1,088.0	1,062.5	1,069.9

Table 10

# Production by State - All species

	2021-2022 Production (× 1000)	Rank	% Change Previous Year	2020-2021 Production (× 1000)	Rank	% Change Previous Year
Alabama	143,585	3	2	141,189	3	16
Arkansas	103,972	4	10	94,751	4	1
Florida	42,770	9	-28	59,645	8	13
Georgia	343,268	1	-4	356,814	1	6
Louisiana	45,708	8	-15	53,677	10	20
Mississippi	80,727	5	-5	85,364	5	-1
N. Carolina	69,726	6	-7	75,065	7	12
Oklahoma	4,265	11	7	3,996	12	33
S. Carolina	220,222	2	38	159,946	2	7
Tennessee	4,239	12	14	3,720	11	-28
Texas	68,769	7	-15	81,014	6	6
Virginia	27,614	10	-15	32,523	9	6

Table 11

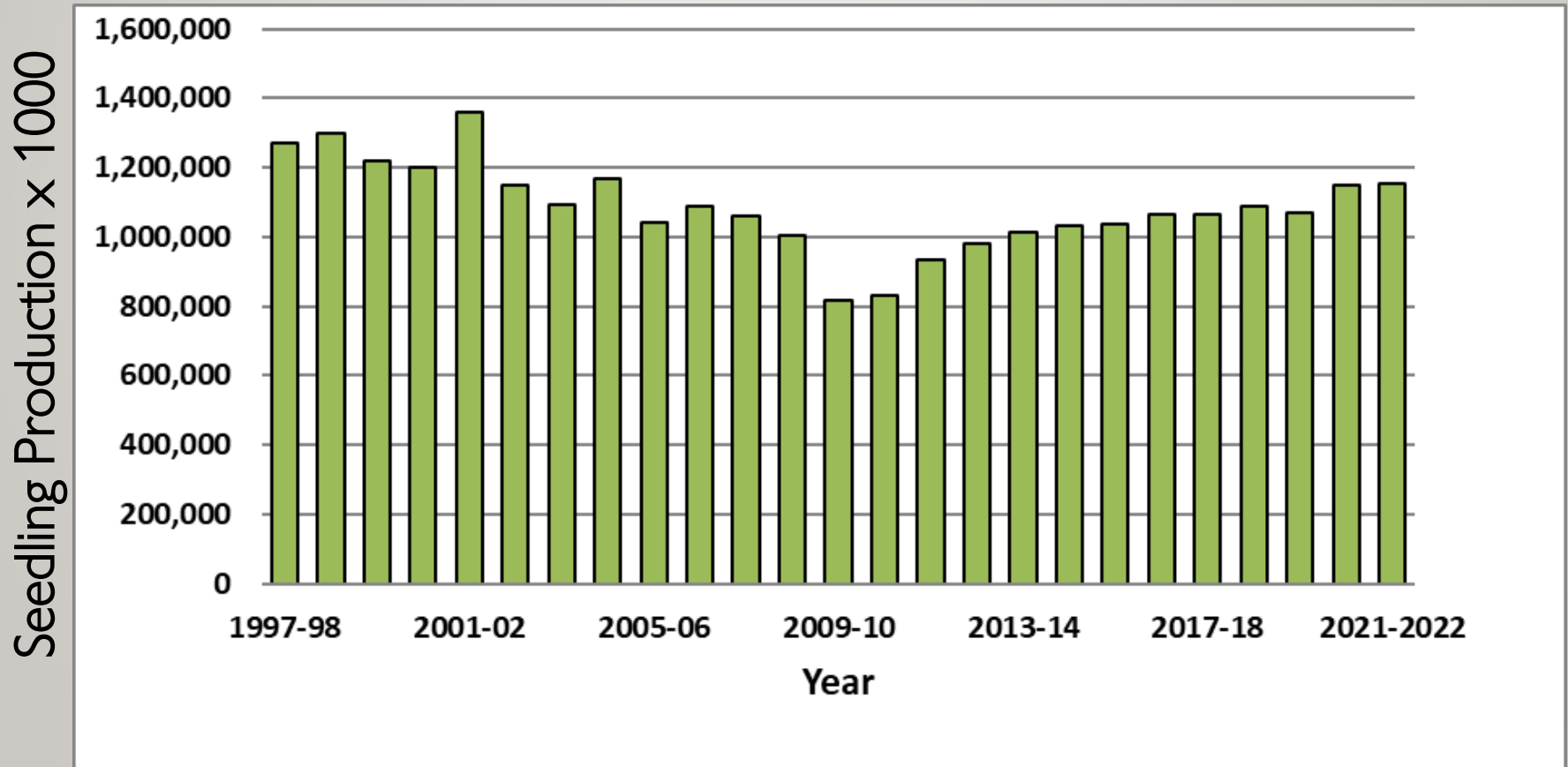
# AU Southern Forest Nursery Management Cooperative Members

---

## All species & stock types

- Nursery Cooperative Members comprise 86% of the southern US region of seedling production.
- Nursery Cooperative Members comprised 92% of bareroot seedlings and 66% of container seedlings.

# Seedling Production: 1997-2021





# 2021-22 Seedling Production Survey

---

1. Regional seedling production increased 7.2 million seedlings from last year to 1,154,863,000 seedlings; the 8<sup>th</sup> year in a row above 1 Billion seedlings per year.
2. Overall seedling production in 2021-2022 increased 1% overall across the region from the 2020-2021 planting season.
3. Regional bareroot conifer production is up 1.4% (867,074,000) and hardwood production is up 8.4% (26,397,000) from the previous planting season.
4. Georgia is the No. 1 seedling producer for conifer (337.8 MM) and Arkansas is the No. 1 hardwood (11.6 MM) seedling producer.
5. Container seedling production increased to 23% of the total number produced, up from the 2% production in 2000.
6. Nursery Cooperative members continue to lead seedling production in the region.

